

**neo** p 550

new. efficient. optimal.

**optrel**<sup>®</sup>  
swiss made 



Automatically better welding

new design.  
efficient performance.  
optimal price.

The optrel **neo p550** combines the advantages of the proven p550 helmet shell with the newest ADF technology from optrel. Experience true color vision in a mid-price helmet. With a new efficient energy concept that keeps it action-ready for 3,000 hours. And a reaction time of only 0.1 ms after striking a welding arc. Perfect protection and comfort for your eyes!



COLOR SPECTRUM OF A  
STANDARD ADF



COLOR SPECTRUM OF THE  
OPTREL NEO P550 WITH TRUE COLOR VIEW



The welder's normal world: environment in green shades with low contrast levels.

The optrel revolution: finally experience true color view during the whole welding process.

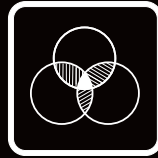
# A classic with newest ADF technology.

The optrel p550 is one of the best-selling welding helmets from optrel. With its new ADF technology it now gets even better.



## SHADE LEVEL 4 / 9-13

With a seamless shade level adjustment from DIN 9 to 13, the **optrel neo p550** is the perfect solution for all popular welding applications.



## TRUE COLOR VIEW

The specially developed UV/IR filter allows a realistic perception of colors, at long last bringing color into the world of the welder.



## DELAY FUNCTION

After shutdown of the welding arc, the ADF momentarily stays closed to protect eyes from the strong afterglow of the welding seam.



## LIGHTWEIGHT

Weighing only 495g, the **optrel neo p550** is one of the lightest automatic welding helmets available. Its ergonomic design minimizes strain on the head and neck, ensuring comfort throughout the work day.



## NEW ENERGY CONCEPT

With its radically more energy efficient electronic system including a „Super-Sleep-Mode“ the **neo p550** stays ready to use for approximately 3,000 hours without changing batteries.



**Helmet system**

**Item no.**

**Helmet system**

**Item no.**



**neo p550** welding helmet  
black

1007.000



**neo p550** welding helmet  
black with hard hat

1007.001



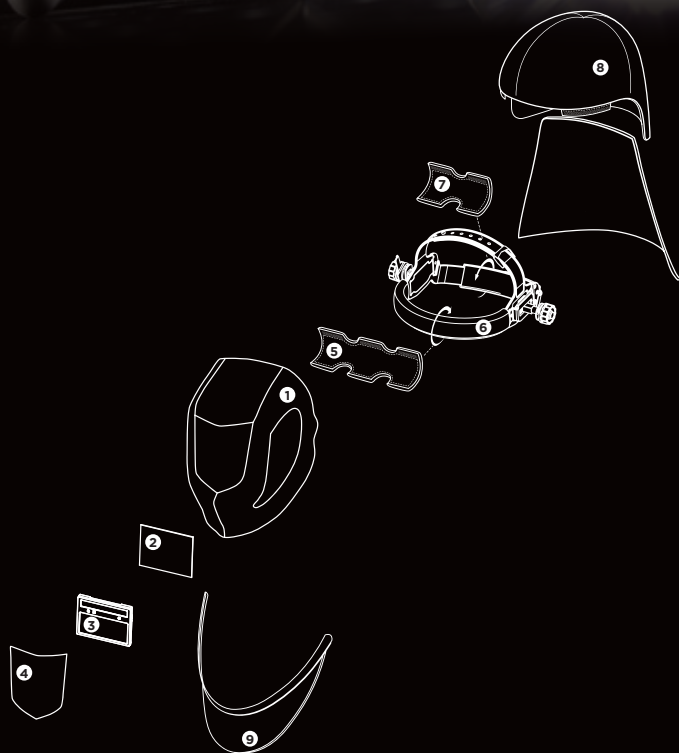
**neo p550** welding helmet  
green

1007.011



**neo p550** welding helmet  
carbon

1007.073



**Spare parts and accessories**

**Item no.**

1a	Helmet shell <b>neo p550</b> black	5001.650
1b	Helmet shell <b>neo p550</b> green	5001.661
1c	Helmet shell <b>neo p550</b> carbon	5001.651
2	Inside cover lens (5 pcs.)	5000.001
3	ADF cartridge <b>neo p550</b>	5012.700
4	Front cover lens (5 pcs.)	5000.250
5	Adjustable headband (including sweatband and comfortband)	5003.250
6	Cotton sweatband (2 pcs.)	5004.073
7	Comfortband (2 pcs.)	5004.020
8	Head & neck protector, leather	4028.016
9	Chest protector, leather	4028.015



## TECHNICAL DATA

Description	<b>ADF cartridge with true color view</b> Shade levels from 9 to 13 continuously adjustable with knob; continuously adjustable sensitivity (with 'super high' range) and delay function		Field of view	<b>50 x 100 mm</b> <b>90 x 110 x 9.5 mm</b>
Shade levels	inactive:	Shade level <b>4</b>	Shape stability	<b>Welding mask: up to 220°C / 428°F</b> <b>Front cover lens: up to 137°C / 266°F</b>
	active:	Shade level <b>9-13</b>	Eye protection	<b>Ultraviolet / Infrared Protection:</b> <b>maximum protection at any shade level</b>
Power supply	<b>Solar cells, 2 pcs batteries 3V</b> <b>exchangeable (CR2032)</b>		Operating temperature	<b>-10°C to + 70°C / 14°F to 158°F</b>
Operating time batteries	<b>Approx. 3,000 hours (operating)</b>		Storage temperature	<b>-20°C to + 70°C / -4°F to 176°F</b>
Sensors	<b>3 sensors</b>		Weight	<b>495 g / 17.4 oz</b>
Sensitivity	<b>Continuously adjustable, new with "Super High" sensitivity</b>		Application ranges	<b>Any electric arc welding process</b> <b>Electrode Welding (Stick Welding, SMAW) / MIG / MAG (GMAW) / GMAW</b> <b>High melting rate process / Flux Cored Wire Welding / TIG welding (GTAW) / Plasma Arc Welding / Plasmacutting &amp; Oxy-gas Welding</b> <i>Prohibited for laser welding!</i>
Switching time	light to dark:	<b>0.100 ms at room temperature</b> <b>0.100 ms at 55°C</b>	Scope of delivery	<b>Welding helmet, instruction manual, batteries</b>
	dark to light:	<b>0.05 s - 1.0 s</b>	Standards	<b>CE, ANSI, EAC, AS/NZS, complies with CSA Z94.3</b>
Classification EN379	Optical class:	<b>1</b>	Warranty	<b>2 years (except batteries)</b>
	Scattered light:	<b>1</b>		
	Homogeneity:	<b>1</b>		
	Angular dependence:	<b>2</b>		

Professional welding  
with true color view.

Your optrel Reseller:

Metalas NV  
Slachthuislaan 21  
2060 Antwerpen  
Tel. +32 (0)3/235.77.17  
E-mail : [info@metalas.be](mailto:info@metalas.be)  
[www.metalas.be](http://www.metalas.be)

 **optrel**<sup>®</sup>  
swiss made 

optrel AG  
industriestrasse 2  
CH-9630 wattwil  
switzerland  
[www.optrel.com](http://www.optrel.com)  
[info@optrel.com](mailto:info@optrel.com)

[optrel.com](http://optrel.com)

